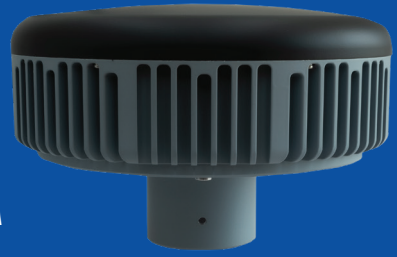


TUALAJ 8300-D

CRPA GNSS ANTI-JAM SYSTEM



GENERAL DESCRIPTION

TUALCOM CRPA Anti-Jam GNSS Systems support critical missions by providing jam free GNSS signals and resilient PNT.

With its 8-element CRPA antenna, state-of-art digital controller and novel beamforming techniques TUALAJ 8300-D eliminates interference to ensure uninterrupted operation of GNSS receivers in the presence of up to 7 jamming sources in 3 different frequency bands. The set of protected active bands is pre-selectable amongst available options.

TUALAJ 8300-D supports various messaging formats and integrates seamlessly with civil and military GNSS receivers deployed on land/sea platforms and fixed installations. TUALAJ 8300-D also offers embedded high performance GNSS receiver as an option and allows SBAS signals to be utilized for increased accuracy and reliability.

TUALAJ 8300-D is encapsulated in specifically designed housing to withstand the harshest environmental conditions and therefore is especially suitable for maritime platforms. In addition to CRPA, protection performance is further improved using adaptive notch filtering and pulse blanking.

BENEFITS

- Protection against 7 jammers
- Easy to install
- Plug and play integration into new or legacy platforms
- Immediate availability for urgent operational needs
- Compatible with all types of external GPS receivers and vehicle navigation systems, including M Code
- Compact Size
- Superior suppression performance
- Embedded GNSS receiver option
- Compatibility with military standards
- Resilient PNT

APPLICATION AREAS

- Naval and Coast Guard Platforms
- Armored Land Vehicles
- Maritime EW Protection
- Critical Infrastructure EW Protection
- Military Communications

TUALAJ 8300-D

CRPA GNSS ANTI-JAM SYSTEM



Dimensions (cm)

Diameter: Ø25

Height: 9.8

Weight (g)

4150

Power Consumption

Maximum 24 W

Antenna Array

8 Array CRPA Antenna

Simultaneous Independent Nulling

7

Simultaneously Protected Active Bands

Option 1

GPS (L1, L2), GLONASS (G1, G2),
GALILEO E1, BEIDOU B1, SBAS

Option 2

GPS (L1, L2, L5),
GALILEO (E1, E5a, E5b),
BEIDOU B1, SBAS

Nominal Wideband Suppression

>50 dB

Connectors

2 x D38999

1 x TNC

Operating Voltage

12-28 Vdc

Operating Temperature

-40 °C to +85 °C

Embedded GNSS Receiver

(Optional)

GPS (L1, L2), GLONASS (G1, G2),
Galileo (E1, E5b), BeiDou (B1I), SBAS,
QZSS (L1), RTCM Support

Environmental Tests

MIL-STD-810G

EMI / EMC

MIL-STD-461F

Data Interfaces

Ethernet (Optional)

Serial RS-232

Serial RS-485

TUALCOM ELEKTRONİK A.Ş.

+90 (312) 485 22 85

info@tualcom.com.tr

www.tualcom.com



© 2023 TUALCOM; The information contained herein is subject to change without notice. TUALCOM Elektronik A.Ş. cannot be held responsible for this and no liability is accepted for any errors or omissions.