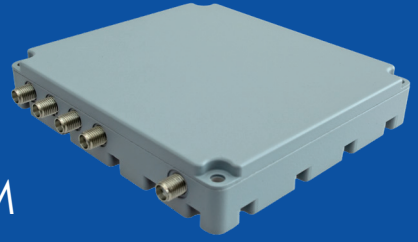


TUALAJ 4300

CRPA GNSS ANTI-JAM SYSTEM



GENERAL DESCRIPTION

TUALCOM CRPA Anti-Jam GNSS Systems support critical missions by providing jam free GNSS signals and resilient PNT.

With its 4-element CRPA antenna, state-of-art digital controller and novel beamforming techniques TUALAJ 4300 eliminates interference to ensure uninterrupted operation of GNSS receivers in the presence of up to 3 jamming sources in 3 different frequency bands. The set of protected active bands is pre-selectable amongst available options.

TUALAJ 4300 supports various messaging formats and integrates seamlessly with civil and military GNSS receivers deployed on land, sea, air manned/unmanned platforms and fixed installations. TUALAJ 4300 also offers an embedded high performance GNSS receiver as an option and allows SBAS signals to be utilized for increased accuracy and reliability.

In addition to CRPA, protection performance is further improved using adaptive notch filtering and pulse blanking.

BENEFITS

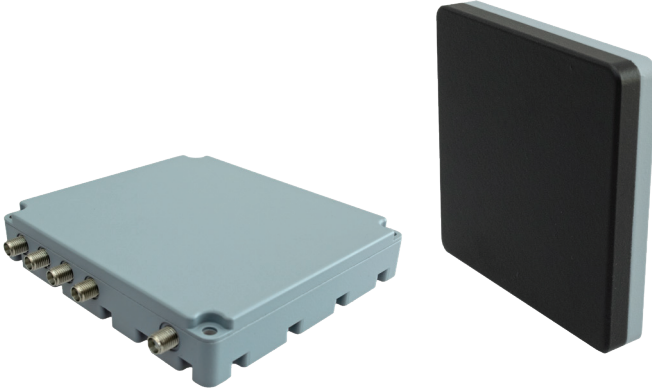
- Protection against 3 jammers in all constellations and frequency bands
- Easy to install
- Plug and play integration into new or legacy platforms
- Immediate availability for urgent operational needs
- Compatible with all types of external GPS receivers and vehicle navigation systems, including M Code
- Light weight and compact size
- Superior suppression performance
- Embedded GNSS receiver option
- Compatibility with military standards
- Resilient PNT

APPLICATION AREAS

- Fixed/Rotary Winged Aircraft
- GNSS Guided Munitions
- Unmanned Autonomous Systems
- Armored Land Vehicles
- Naval and Coast Guard Platforms
- Maritime EW Protection
- Critical Infrastructure EW Protection
- Advanced Transportation Systems
- Military Communications

TUALAJ 4300

CRPA GNSS ANTI-JAM SYSTEM



Dimensions (cm)

11 x 10 x 2 (DACU)
10.5 x 10.5 x 2.3 (Antenna)

Weight (g)

440 (DACU)
430 (Antenna)

Power Consumption

Maximum 18 W

Antenna Array

4 Array CRPA Antenna

Simultaneous Independent Nulling

3

Simultaneously Protected Active Bands

Option 1

GPS (L1, L2), GLONASS (G1, G2),
GALILEO E1, BEIDOU B1, SBAS

Option 2

GPS (L1, L2, L5), GALILEO (E1, E5a, E5b),
BEIDOU B1, SBAS

Nominal Wideband Suppression

>40 dB

Connectors

5x SMA Female,
Micro-D 25-pin Socket

Operating Voltage

12-28 Vdc

Operating Temperature

-40 °C to +85 °C

Embedded GNSS Receiver (Optional)

GPS (L1, L2), GLONASS (G1, G2),
Galileo (E1, E5b), BeiDou (B1I),
SBAS, QZSS (L1), RTCM Support

Environmental Tests

MIL-STD-810G

EMI / EMC

MIL-STD-461F

Data Interfaces

Ethernet
Serial RS-232
Serial RS-485

TUALCOM ELEKTRONİK A.Ş.

+90 (312) 485 22 85

info@tualcom.com.tr

www.tualcom.com

