

ANTY GPS ANTI-JAMMER SYSTEM



Powerful Anti-
Jamming for
Civilian
Applications

GENERAL DESCRIPTION

ANTY GPS-GNSS Anti-Jammer is a small, lightweight, low power and affordable solution for robust GNSS operation under interference.

With in-house developed novel beamforming techniques and state-of-the-art CRPA technology, ANTY outperforms its competitors ensuring GNSS availability in the presence of jamming.

ANTY supports various messaging formats and integrates seamlessly with GNSS receivers deployed on land, sea, air platforms (including drones). ANTY also offers an embedded high performance GNSS receiver as an option and allows SBAS signals to be utilized for increased accuracy and reliability. In addition to CRPA, protection performance is further improved using adaptive notch filtering and pulse blanking.

Smaller than a matchbox car and weighing mere 80g, ANTY can be retrofitted to legacy systems with minimum effort elevating the availability performance to a new level. ANTY also provides a hassle-free integration opportunity for new resilient GNSS designs.

BENEFITS

- Easy to install
- Plug and play integration into new or legacy platforms
- Immediate protection for urgent operational needs
- Compatible with all types of external GNSS receivers and vehicle navigation systems
- Light weight and ultra compact size
- Superior suppression performance
- Embedded GNSS receiver option
- Resilient PNT

APPLICATION AREAS

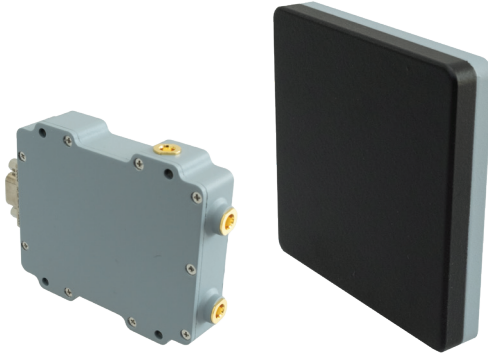
- Dismounted Soldier
- Advance Transportation Systems
- Rotary Wing Drones
- Unmanned Autonomous Systems
- EW Protection for Communications and Timing
- Agricultural Applications
- Vehicle Tracking Systems
- Civil Drones



Real-Life Size

ANTY GPS ANTI-JAMMER SYSTEM

Powerful Anti-
Jamming for
Civilian
Applications



Dimensions (cm)

4.5 x 5.8 x 1.25 (DACU)
4.3 x 6.2 x 1.2 (Antenna)

Weight (g)

80 (DACU)
73 (Antenna)

Power Consumption

Maximum 3 W

Antenna Array

2 Array CRPA Antenna

Simultaneous Independent Nulling

1

Simultaneously Protected Active Bands

GPS L1
GALILEO E1, BEIDOU B1
SBAS

Nominal Wideband Suppression

>40 dB

Connectors

3x MCX Female,
Micro-D 9-pin Socket

Operating Voltage

5-12 Vdc

Operating Temperature

-40 °C to +85 °C

Embedded GNSS Receiver (Optional)

GPS (L1), Galileo (E1), BeiDou (B1I),
SBAS, QZSS (L1), RTCM Support

Data Interface

Serial RS-485

TUALCOM ELEKTRONİK A.Ş.

+90 (312) 485 22 85

info@tualcom.com.tr

www.tualcom.com

